



INNOVATION in Cable Drag Chains



INTERNATIONAL EXPERTISE



CABLE DRAG CHAINS BY MURRPLASTIK SYSTEMTECHNIK

The Murrplastik Systemtechnik, Oppenweiler has been setting industry standards in cable drag chains for years especially with regards to ease of assembly and maintenance.

The comprehensive portfolio of Murrplastik cable drag chains offers a range of inner widths from 6 to 546 mm. Murrplastik cable drag chains are used all over the world and meet the highest demands on durability and robustness.

QUALITY MADE IN GERMANY – AND GLOBAL

manufacturer of cable drag chains for over 30 years

- Numerous patents for innovative products
- Great product diversity off-the-shelf
- Product development with the customer in mind
- Test- and development centre on ca. 500 m²

AT YOUR SIDE, WORLDWIDE ...

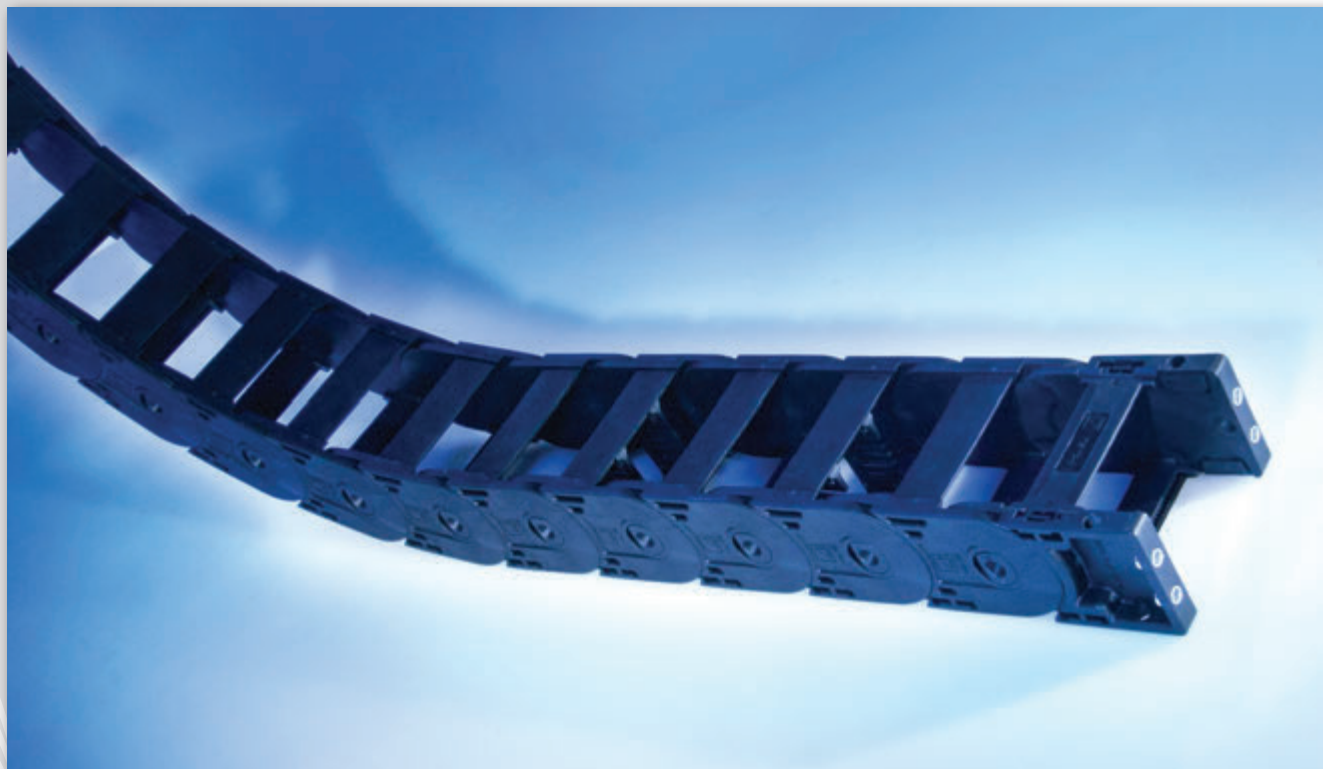
- Sales
- Warehousing
- Production
- Service

GLOBAL SALES NETWORK

- Italy
- Switzerland
- Denmark
- Germany
- France
- Austria
- USA
- China
- Spain



MP 45



MP 45

LOW-COST TWO-PART CHAIN, UNIVERSAL USE, SHIELDED STOP SYSTEM

Model: U-part chain

Internal height: 45 mm

MP 45.1 Frame bridge, can be opened in the outside bend

MP 45.2 Frame bridge, can be opened in the inside bend

Internal layout:

RTT – Shelf support, divisible

TRT – Separator, divisible

TR-V – Separator, movable

RB – Shelves

Chain brackets:

Chain bracket, swivels to one or both sides.

Strain relief (can be integrated in chain bracket)

Frame bridge strain relief (RS-ZL) or C-rail
for mounting bow clamps.

Dampers for the end stops

Availability:

Width 50 a. 75 mm until Dec. 2015

Width 100 a. 125 mm until April 2016

Width 150 and 175 mm until July 2016

Each with the radii

R75 / 100 / 125 / 150 / 200 / 250 / 300 mm

1



Frame bridges, swivel to both sides, for easy filling of the chain.



4



Low cable wear interior.

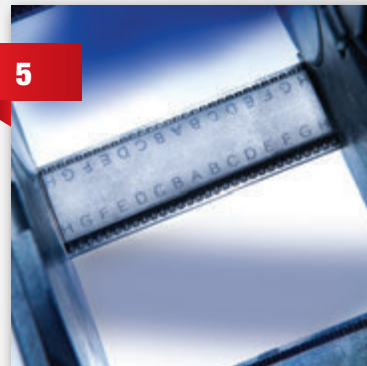


2



„Wings“ cover the side links. Increases stability.

5



Interior layout provides clear allocation (ABC) and fixing with a latching system.

3



Dampers for the end stops.

6



Runner to increase the service life in case of gliding installation

MP 52.4 / MP 62.4



MP 52.4 / MP 62.4

COST REDUCTION WITH MATERIAL SAVINGS, NOISE REDUCTION THROUGH DAMPING SYSTEMS, QUICK AND SIMPLE INSTALLATION USING A PROVEN MODULAR SYSTEM

Model: Side-link chain (can be opened on both sides)
Internal height: 52.4; 52.5: 52 mm
Internal height: 62.4; 62.5: 62 mm

Internal layout:
RTT shelf support, divisible
TR separator
TR-V separator, movable
RB shelves

Chain brackets:
Flexible chain bracket, swivels on one or on both sides.

Dampers for the end stops

Sliding blocks

**Reduced wall thickness on the side link walls
from 16 mm to 13 mm**

Availability of MP 52.4:
RV125, RV150, RV200 (Nov. 2015)
RV135, RV175, RV250, RV300 (May 2016)

Availability of MP 62.4:
RV135, RV150, RV200 (Nov. 2015)
RV175, RV250, RV300 (May 2016)



1

Letters and lock tabs
in the frame bridges



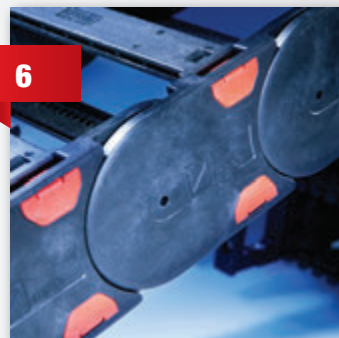
5

Frame rail strain relief can
be installed on the inside
or outside bend



2

Total width of the C-rail can
be used for strain relief



6

Soil-resistance because of
smooth outer contour



3

Bushes to prevent cold flow



7

Noise reduction through
dampening elements in
the end stops



4

Low cable wear interior

MP 52.6



MP 52.6

DEVELOPED FOR SLIDING APPLICATIONS
WITH HIGH ADDITIONAL LOADS.

Model: Side-link chain
(can be opened on both sides)

Internal height: 52 mm

MP 52.6: Radii 250 mm and 300 mm

Chain widths: of 71 to 600 mm with
aluminium frame bridges

Internal layout:

RTT	shelf support, divisible
TR	separator
RB	shelves
RSV	frame bridge connector

Chain brackets: KA flexible, swivels to one side

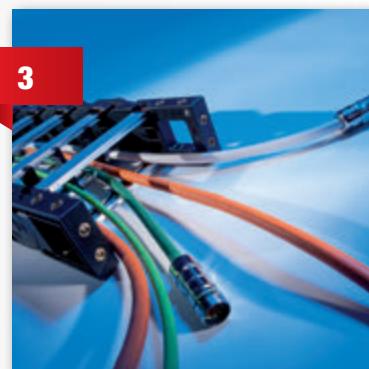
Sliding blocks



Higher stability through wider side links



Longer service life through
exchangeable sliding blocks



Strain relief can be mounted on C-rail

PRODUCT EXPANSIONS

CUSTOMIZED

Coloured locking mechanisms
(Frame bridges and side links)
Company name on the chain
or on the locking system



NEW FRAMES

New frame bridges for series:

PowerLine:

MP 32.2

MP 41.2

MP 52.2

HeavyLine:

MP 62.2

MP 82.2

MP 102.2

HeavyLine:

INTERNAL WIDTH	TYPE
93 mm	RS 093-7
106 mm	RS106-7
131 mm	RS 131-7
156 mm	RS 156-7
181 mm	RS 181-7
206 mm	RS 206-7
231 mm	RS 231-7
256 mm	RS 256-7

PowerLine:

INTERNAL WIDTH	TYPE
57 mm	RS 057-5
93 mm	RS 093-5
104 mm	RS 104-5
164 mm	RS 164-5
208 mm	RS 208-5
233 mm	RS 233-5

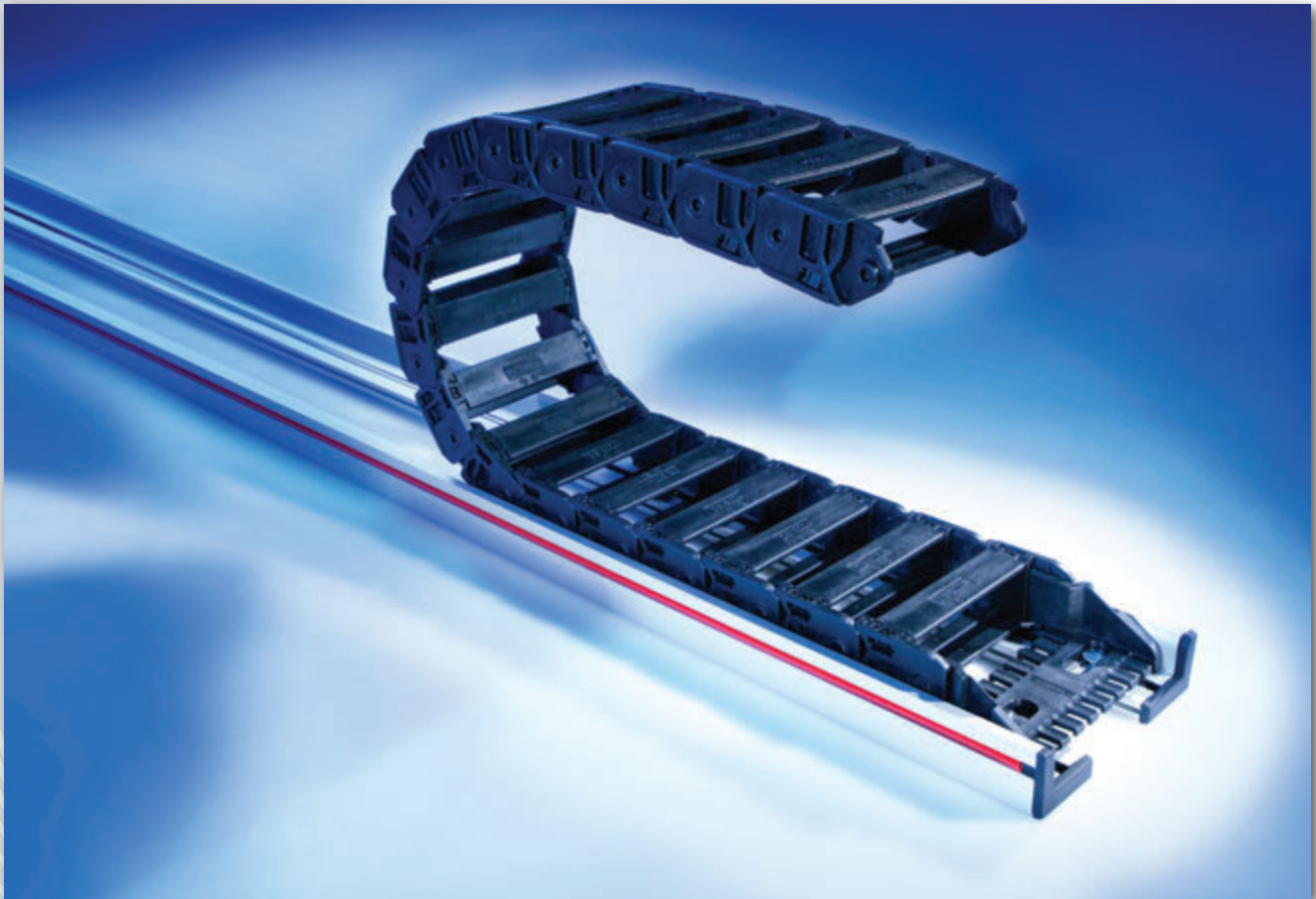
CONNECT4MOTION

Pre-assembled cable drag chain systems

- the complete turnkey system, including all components, from one system supplier
- Shorter assembly times
- Excellent on-site consulting
- 100 % function check before delivery
- One contact person from planning on through to after-sales service



noiseLESS



noiseLESS

Automation engineering demands the controlled, yet flexible routing of power cables, to a control cabinet for example. These are usually routed motor cables, signal lines, but can also be pneumatic hoses.

The polygon effect of the chain links, which is created when the chain rolls off, can develop interference noises, especially at higher speeds.

The noiseLESS-System reduces this interference by up to 20 decibels, by using effective dampening elements. This creates a much quieter work environment, supporting better concentration.

noiseLESS

Up to 20 dB noise reduction, compared to conventional routing systems

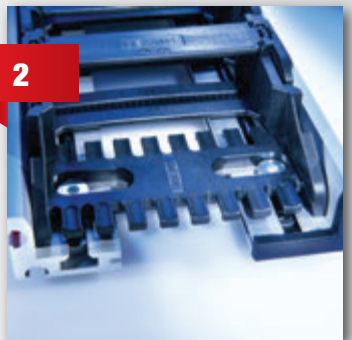
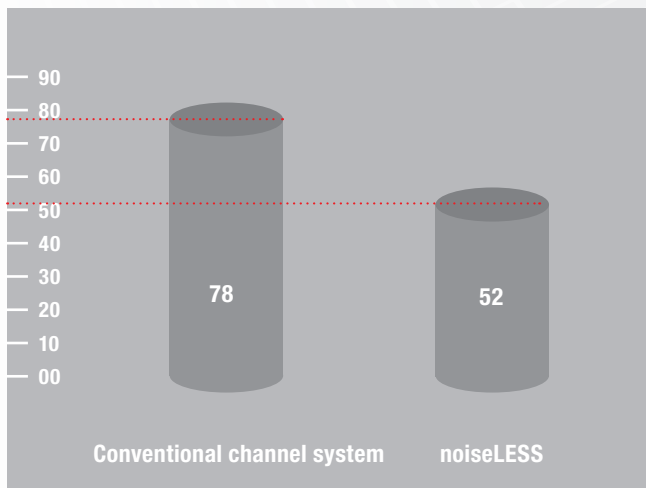
Primary applications:

Self-supporting applications of cable drag chains
For environments of quick acceleration and high travel speeds of the cable drag chains

Design variations:

noiseLESS GEN 1:	MP 3000
noiseLESS GEN 2:	MP 25
	MP 30
	MP 32.2
	MP 41.2
	MP 45 new

Noise level (dB)



www.mp.de

Germany (Head Office)

Murrplastik Systemtechnik GmbH
Postfach 1143
71567 Oppenweiler
☎ +49 7191 4820
www.murrplastik.de
info@murrplastik.de

Americas (North/South)

Murrplastik Systems, Inc.
1175 US Highway 50
Milford, OH 45150
☎ +1 513 201 30 69
www.murrplastik.com
cablemgmt@murrplastik.com

Austria

Murrplastik Systemtechnik GmbH
☎ +43 732 660 870
www.murrplastik.at
info@murrplastik.at

China

Murrplastik Asia Co., Ltd.
1802 Rm. No. 218
Hengfeng Rd.
200070 Shanghai
☎ +86 21 512 869 25
www.murrplastik.com.cn
info@murrplastik.com.cn

Denmark

**Filial af
Murrplastik Systemtechnik GmbH**
Tyskland, Stenager 2
6400 Sønderborg
☎ +45 2347 00 24
www.murrplastik.dk
info@murrplastik.dk

France

Murrtechnic S.à.r.l
Zone industrielle Sud,
6 rue Manurhin
B.P. 62, 68120 Richwiller
☎ +33 389 570 010
www.murrtechnic.fr
info@murrtechnic.fr

Italy

Murrplastik Italia S.r.l.
Via Circo, 18
20123 Milano
☎ +39 02 856 805 70
www.mp.de
info@it.mp.de

Russia

**Офис компании
Murrplastik в Москве**
Gilyarovskogo 57, building 1
129110 Moscow
☎ +7 495 684 17 37
www.murrplastik.ru
info@murrplastik.ru

Spain

Murrplastik S.L.
Paseo Ubarburu, 76
Pabellón 34, polígono 27
20014 San Sebastián
☎ +34 943 444 837
www.murrplastik.es
info@murrplastik.es

Switzerland

Murrplastik AG
Ratihard 40
8253 Willisdorf
☎ +41 52 646 06 46
www.murrplastik.ch
info@murrplastik.ch



1101SF

15



MP8902804030