




OHSAS 18001
Certified Occupational
Health & Safety
Management System


ISO 14001
Certified Environmental
Management System


ISO 9001
Certified Quality
Management System



www.cembre.com

CONNECTORS FOR CONTROL, POWER AND DISTRIBUTION

A-M



COPPER TUBE CRIMPING LUGS

A-M series lugs are manufactured from electrolytic Copper tube. The dimensions of the tube are designed to obtain the most efficient electrical conductivity and mechanical strength to resist vibration and pull out.

Cembre lugs are annealed to guarantee optimum ductility which is an absolute necessity for connectors which will have to withstand the severe deformation arising when compressed and any bending of the palm during installation.

mm ²	M4	M5	M6	M8	M10	M12	M14	M16	M20
6	A1-M4	A1-M5	A1-M6	A1-M8	A1-M10				
10	A2-M4	A2-M5	A2-M6	A2-M8	A2-M10	A2-M12			
16	A3-M4	A3-M5	A3-M6	A3-M8	A3-M10	A3-M12			
25	A5-M4	A5-M5	A5-M6	A5-M8	A5-M10	A5-M12			
35		A7-M5	A7-M6	A7-M8	A7-M10	A7-M12			
50			A10-M6	A10-M8	A10-M10	A10-M12	A10-M14	A10-M16	
70			A14-M6	A14-M8	A14-M10	A14-M12	A14-M14	A14-M16	
95			A19-M6	A19-M8	A19-M10	A19-M12	A19-M14	A19-M16	A19-M20
120				A24-M8	A24-M10	A24-M12	A24-M14	A24-M16	A24-M20
150				A30-M8	A30-M10	A30-M12	A30-M14	A30-M16	A30-M20
185				A37-M8	A37-M10	A37-M12	A37-M14	A37-M16	A37-M20
240				A48-M8	A48-M10	A48-M12	A48-M14	A48-M16	A48-M20
300					A60-M10	A60-M12	A60-M14	A60-M16	A60-M20
400						A80-M12	A80-M14	A80-M16	A80-M20

HR



COPPER TUBE CRIMPING LUGS

HR series lugs are manufactured from electrolytic Copper tube and designed to obtain high electrical conductivity combined with the mechanical strength required to resist vibration and pull out.

The barrel entrance of the lug is chamfered to allow easy conductor insertion, while its length facilitates precise positioning of the crimping die.

mm ²	M6	M8	M10	M12	M14	M16	M20
10	HR10-6	HR10-8	HR10-10	HR10-12			
16	HR16-6	HR16-8	HR16-10	HR16-12			
25	HR25-6	HR25-8	HR25-10	HR25-12	HR25-14		
35	HR35-6	HR35-8	HR35-10	HR35-12	HR35-14	HR35-16	
50	HR50-6	HR50-8	HR50-10	HR50-12	HR50-14	HR50-16	
70		HR70-8	HR70-10	HR70-12	HR70-14	HR70-16	
95		HR95-8	HR95-10	HR95-12	HR95-14	HR95-16	HR95-20
120		HR120-8	HR120-10	HR120-12	HR120-14	HR120-16	HR120-20
150		HR150-8	HR150-10	HR150-12	HR150-14	HR150-16	HR150-20
185			HR185-10	HR185-12	HR185-14	HR185-16	HR185-20
240			HR240-10	HR240-12	HR240-14	HR240-16	HR240-20
300				HR300-12		HR300-16	

T-M



COPPER TUBE CRIMPING LUGS ACCORDING TO NF C 20-130

T-M series lugs are manufactured from electrolytic Copper tube. The dimensions of the tube are designed to obtain the most efficient electrical conductivity and mechanical strength to resist vibration and pull out.

In applications subject to vibration, lugs still have to provide a reliable connection and annealing plays a vital role in avoiding cracking or breaks between the barrel and palm. The insertion of the cable is facilitated by the flared design.

mm ²	M5	M6	M8	M10	M12	M14	M16	M20
6	T6-M5	T6-M6	T6-M8					
10	T10-M5	T10-M6	T10-M8	T10-M10				
16	T16-M5	T16-M6	T16-M8	T16-M10				
25		T25-M6	T25-M8	T25-M10	T25-M12			
35		T35-M6	T35-M8	T35-M10	T35-M12			
50		T50-M6	T50-M8	T50-M10	T50-M12			
70			T70-M8	T70-M10	T70-M12			
95			T95-M8	T95-M10	T95-M12	T95-M14	T95-M16	
120			T120-M8	T120-M10	T120-M12	T120-M14	T120-M16	
150				T150-M10	T150-M12	T150-M14	T150-M16	
185				T185-M10	T185-M12	T185-M14	T185-M16	
240				T240-M10	T240-M12	T240-M14	T240-M16	T240-M20
300				T300-M10	T300-M12	T300-M14	T300-M16	T300-M20
400							T400-M16	T400-M20

DR



COPPER TUBE CRIMPING LUGS ACCORDING TO DIN 46235

DR series lugs are manufactured from electrolytic Copper tube and designed to obtain high electrical conductivity combined with the mechanical strength required to resist vibration and pull out.

Cembre lugs are annealed and Tin plated for improved surface protection. Dimensions are according to DIN 46235.

mm ²	M5	M6	M8	M10	M12	M16	M20
10	DR10-5	DR10-6	DR10-8*	DR10-10*			
16	DR16-5*	DR16-6	DR16-8	DR16-10	DR16-12*		
25		DR25-6	DR25-8	DR25-10	DR25-12		
35		DR35-6*	DR35-8	DR35-10	DR35-12	DR35-16*	
50		DR50-6*	DR50-8	DR50-10	DR50-12	DR50-16	
70			DR70-8	DR70-10	DR70-12	DR70-16	DR70-20*
95			DR95-8*	DR95-10	DR95-12	DR95-16	DR95-20*
120			DR120-8*	DR120-10	DR120-12	DR120-16	DR120-20
150				DR150-10	DR150-12	DR150-16	DR150-20
185				DR185-10	DR185-12	DR185-16	DR185-20
240				DR240-10*	DR240-12	DR240-16	DR240-20
300					DR300-12*	DR300-16	DR300-20
400					DR400-12*	DR400-16	DR400-20
500					DR500-12*	DR500-16*	DR500-20

* Dimensions of the tube according to DIN 46235; Stud hole not included within the standard.

2A-M



HEAVY DUTY COPPER TUBE TERMINALS

2A-M series terminals are made from high purity Copper tube, and are annealed. They feature a double length barrel for enhanced electrical and mechanical performance in heavy duty applications.

The absence of an inspection hole prevents the entry of water or moisture into the crimped joint making these terminals suitable for outdoor applications.

mm ²	M8	M10	M12	M14	M16	M20
16	2A3-M8	2A3-M10				
25	2A5-M8	2A5-M10	2A5-M12			
35	2A7-M8	2A7-M10	2A7-M12			
50		2A10-M10	2A10-M12	2A10-M14	2A10-M16	
70		2A14-M10	2A14-M12	2A14-M14	2A14-M16	
95		2A19-M10	2A19-M12	2A19-M14	2A19-M16	2A19-M20
120		2A24-M10	2A24-M12	2A24-M14	2A24-M16	2A24-M20
150		2A30-M10	2A30-M12	2A30-M14	2A30-M16	2A30-M20
185			2A37-M12	2A37-M14	2A37-M16	2A37-M20
240			2A48-M12	2A48-M14	2A48-M16	2A48-M20
300			2A60-M12	2A60-M14	2A60-M16	2A60-M20
400			2A80-M12	2A80-M14	2A80-M16	2A80-M20
500					2A100-M16*	2A100-M20*
630					2A120-M16*	2A120-M20*
800						2A160-M20*
1000						2A200-M20*

*Not UL approved

L-M



THROUGH CONNECTORS

L-M range of connectors are designed for jointing low voltage conductors. Made of electrolytic Copper tube having the same dimension as A-M series lugs: L-M connectors are annealed and electrolytically Tin plated.

They feature an internal taper at both ends to ease the introduction of the conductor and a central stop to ensure correct positioning.

mm ²	10	16	25	35	50	70	95	120	150	185
M	L2-M	L3-M	L5-M	L7-M	L10-M	L14-M	L19-M	L24-M	L30-M	L37-M
mm ²	240	300	400	500						
M	L48-M	L60-M	L80-M	L100-M						

CONNECTORS FOR ALUMINIUM CONDUCTORS

CAA



BIMETALLIC CONNECTORS

The barrels of series CAA-M connectors are made from Aluminium of a purity equal to or greater than 99,5%.

The barrel is friction welded to the palm thus achieving the best possible transition between the copper palm and Aluminium barrel.

Barrels are capped and filled with grease so as to avoid oxidation of the Aluminium.

mm ²	M12	M16
10	CAA10-M12	
16	CAA16-M12	
25	CAA25-M12	
35	CAA35-M12	
50	CAA50-M12	
70	CAA70-M12	
95	CAA95-M12	
120	CAA120-M12	
150	CAA150-M12	
185	CAA185-M12	
240	CAA240-M12	
300	CAA300-34-M12	
400		CAA300-M16
500		CAA400-M16
		CAA500-M16 TNBD

INSULATED CABLE CONNECTIONS & END SLEEVES

RF
BF
GF



PVC INSULATED TERMINALS - ring terminals

mm²	Color	M3	M3.5	M4	M5	M6	M8	M10	M12
0,25 ÷ 1,5	Red	RF-M3	RF-M3.5	RF-M4	RF-M5	RF-M6	RF-M8	RF-M10	RF-M12
1,5 ÷ 2,5	Blue	BF-M3	BF-M3.5	BF-M4	BF-M5	BF-M6	BF-M8	BF-M10	BF-M12
4 ÷ 6	Yellow	GF-M3	GF-M3.5	GF-M4	GF-M5	GF-M6	GF-M8	GF-M10	GF-M12

PVC INSULATED TERMINALS - fork/spade terminals

mm²	Color	U3	U3.5	U4	U5	U6	U8	U10	U12	U14
0,25 ÷ 1,5	Red	RF-U3	RF-U3.5	RF-U4	RF-U5	RF-U6	RF-U8	RF-U10	RF-U12	—
1,5 ÷ 2,5	Blue	BF-U3	BF-U3.5	BF-U4	BF-U5	BF-U6	BF-U8	BF-U10	BF-U12	BF-U14
4 ÷ 6	Yellow	GF-U3	GF-U3.5	GF-U4	GF-U5	GF-U6	GF-U8	GF-U10	GF-U12	GF-U14



PVC INSULATED TERMINALS - pin terminals

mm²	Color	P8	P10	P12	P14
0,25 ÷ 1,5	Red	RF-P8	RF-P10	RF-P12	—
1,5 ÷ 2,5	Blue	BF-P8	BF-P10	BF-P12	—
4 ÷ 6	Yellow	—	GF-P10	GF-P12	GF-P14



PVC INSULATED TERMINALS - blade terminals

mm²	Color	PP12	PP14	PP17
0,25 ÷ 1,5	Red	RF-PP12	RF-PP14	—
1,5 ÷ 2,5	Blue	BF-PP12	—	—
4 ÷ 6	Yellow	GF-PP12	—	GF-PP17



The unique funnel shaped PVC sleeve guarantees total insertion of the conductor strands into the terminal barrel, creating a secure and reliable, electrical and mechanical connection. The internal surface of the barrel is rifled to improve contact with conductor strands when crimped and to increase tensile strength. The "F" range of terminals offers a wide selection of rings, forks, pins and blades, designed to meet the ever changing end user requirements. The operating temperature range is -20 to +80°C (Surge +90°C). Also available Halogen Free.

RF-F
BF-F
GF-F



FEMALE DISCONNECT TERMINALS - Polycarbonate insulated terminals

mm²	Color	2,8x0,5	2,8x0,8	4,8x0,5	4,8x0,8	6,35x0,8
0,25 ÷ 1,5	Red	RF-F305	RF-F308*	RF-F405	RF-F408	RF-F608
1,5 ÷ 2,5	Blue	—	—	BF-F405	BF-F408	BF-F608
4 ÷ 6	Yellow	—	—	—	—	GF-F608

- Electrolytically Tin plated
- The operating temperature range is -20 to +115°C (Surge +130°C). Add to code: P for fully insulated terminals.



*Not UL approved

NL-M



BUTT CONNECTORS

Polyamide PA6.6 insulated

mm²	Color	Type
0,25 ÷ 1,5	Red	NL03-M
1,5 ÷ 2,5	Blue	NL06-M
4 ÷ 6	Yellow	NL1-M
10	Red	NL2-M
16	Blue	NL3-M

- Electrolytically Tin plated
- The operating temperature range is -20 to +115°C (Surge +130°C).

RF-M
BF-M
GF-M



MALE DISCONNECT TERMINALS

Polycarbonate insulated terminals

mm²	Color	insulated	fully insulated
0,25 ÷ 1,5	Red	RF-M608	RF-M608P
1,5 ÷ 2,5	Blue	BF-M608	BF-M608P
4 ÷ 6	Yellow	GF-M608	—

- Electrolytically Tin plated
- The operating temperature range is -20 to +115°C (Surge +130°C).

NL-P



CLOSE END CONNECTORS

mm²	Color	Type
0,25 ÷ 1,5	Red	NL03-P
1,5 ÷ 2,5	Blue	NL06-P
4 ÷ 6	Yellow	NL1-P
10	Red	NL2-P
16	Blue	NL3-P

- Electrolytically Tin plated
- The operating temperature range is -20 to +115°C (Surge +130°C).

PL

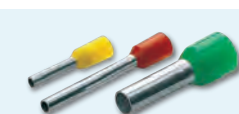


PVC BUTT AND PARALLEL CONNECTORS

mm²	Color	Type
0,2 ÷ 0,5	Green	PL01-M
0,25 ÷ 1,5	Red	PL03-M
1,5 ÷ 2,5	Blue	PL06-M
4 ÷ 6	Yellow	PL1-M

- Electrolytically Tin plated
- The operating temperature range is -20 to +80°C (Surge +90°C).

PKD



PA6 INSULATED END SLEEVES

The PKD range of end sleeves is manufactured from Tin plated electrolytic Copper.

Designed and developed to reinforce fine wire strands when terminating a cable into a connector block. The PKD series of insulated end sleeves comply with specification DIN 46 228/4. The operating temperature range is -20 to +115°C

mm²	Ref.
0,3 ÷ 0,5	PKD506
	PKD508
	PKD510
0,75	PKD7506
	PKD7508
	PKD7510
	PKD7512
1	PKD106
	PKD108
	PKD110
	PKD112

mm²	Ref.
1,5	PKD1508
	PKD1510
	PKD1512
	PKD1518
2,5	PKD2508
	PKD2512
	PKD2518
4	PKD410
	PKD412
	PKD418
6	PKD612
	PKD618

mm²	Ref.
10	PKD1012
	PKD1018
16	PKD1612
	PKD1618
25	PKD25016
	PKD25022
35	PKD35016
	PKD35025
50	PKD50020
	PKD50025

WL-M



PE HD insulated, heat shrinkable

mm²	Color	Type
0,25 ÷ 1,5	Red	WL03-M
1,5 ÷ 2,5	Blue	WL06-M
4 ÷ 6	Yellow	WL1-M

- Electrolytically Tin plated
- Heat shrink sleeve with sealant

VALSTAR V3-F

ROBUST PLASTIC CASE

Containing:

- An assortment of PVC insulated crimp terminals for conductor sizes
- 0,25 to 6 mm² (22÷10 AWG).
- Tool Crimpstar® HP 3.



VALSTAR ND#2

ROBUST PLASTIC CASE

Containing:

- a selection of end sleeves PKD or PKE or PKC
- conductor size 1÷6 mm²
- Tool ND#2



MECHANICAL CRIMPING TOOLS

HP3



HNKE



HN-A25



HN-D25



ZKE610



ZKE616



INSULATED TERMINALS

Crimping range:
PVC, PC and PA6.6 insulated terminals and connectors for conductor sizes 0,25 to 6 sqmm
Length: 234,5 mm

END SLEEVES

Crimping range:
End sleeves for conductor sizes 0,5 to 4 sqmm
4 to 16 sqmm
25 - 35 - 50 sqmm
Length: 236 mm

COPPER TUBE CRIMPING

Crimping range:
Uninsulated terminals and connectors A-M, L-M and L-P series for conductor sizes 10 to 25 sqmm
Length: 229 mm

COPPER TUBE CRIMPING

Crimping range:
Cu tube lugs DR (DIN) and through connectors DSV (DIN) for conductor sizes 10 to 25 sqmm
Length: 234,5 mm

END SLEEVES

Crimping range:
Single aperture, ratchet controlled tool for crimping end sleeves, 0,08 to 10 sqmm side insertion

INSULATED TERMINALS

Crimping range:
PVC, PC and PA6.6 insulated terminals and connectors for conductor sizes 0,08 to 16 sqmm

*Not UL approved

IDENTIFICATION & LABELLING SYSTEMS

MG3

SPEED

prints 112 4x10 cable tags in less than 12 seconds

CONVENIENCE

software provides quick and easy upload of the data to be printed

ECONOMY

prints around 140.000 4x10 cable tags with a single ribbon

QUALITY

printer resolution 300x600 dpi

DIMENSIONS

•Length: 382mm •Width:230mm •Height:221mm •Weight:7,4Kg



ROLLY3000

SPEED

prints 4.000 4x10 cable tags in less than two minutes 1.000 thermoshrink tubes in less than 3 minutes

CONVENIENCE

software provides quick and easy upload of the data to be printed

ECONOMY

prints around 140.000 4x10 cable tags with a single ribbon

QUALITY

printer resolution 300 dpi

DIMENSIONS

•Length: 460mm •Width:252mm •Height:288mm •Weight:10Kg



New

THERMAL TRANSFER PRINTER

MARKINGENIUS®MG3 is a high resolution plug&play flat bed printer based on thermal transfer technology, capable of producing tags for cables, pipes and tubes; terminal block markers and legends and labels for all electrical panels, components and equipment.

THERMAL TRANSFER PRINTER FOR ROLL MEDIA

ROLLY3000 is ideal for printing all Cembre flat material on rolls, eg. cable tags for holders, tie on, wraparound cable markers, legend strips and labels.

Maximum print area: 105 mm wide, up to 200 m long.

HOW TO MARK

COMPONENTS



MG-TAP



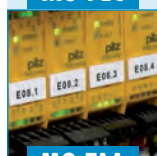
MG-TAR



MG-PLC

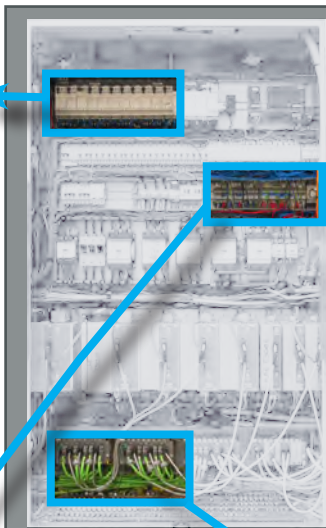


MG-VYT



MG-TAA

PANEL INTERIORS



PANEL EXTERIORS



PLATES - LABELS PUSH BUTTONS



MG-SIGNS



MG-PTS



MG-SAT



GMCK

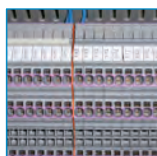


MG-SIGNS



MG-VRT-R

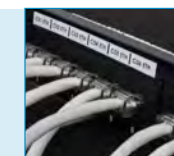
TERMINAL BLOCKS



MG-CPMF



MG-CPM



MG-VYB

SINGLE CABLES



MG-TDM



MG-TPMF



KM-ROLL



TERMO-ROLL

 **Cembre**

www.cembre.com



1 8 V 0 5 6 E



8 016692 889597



Cembre S.p.A.
Telefono: +39 030 36921
Telefax: +39 030 3365766
www.cembre.it
E-mail: sales@cembre.com



Cembre Ltd.
Tel.: +44 01675 470440
Fax: +44 01675 470220
www.cembre.co.uk
E-mail: sales@cembre.co.uk



Cembre S.a.r.l.
Tél.: +33 01 60 49 11 90
Fax: +33 01 60 49 29 10
www.cembre.fr
E-mail: info@cembre.fr



Cembre España S.L.U.
Teléfono: +34 91 4852580
Telefax: +34 91 4852581
www.cembre.es
E-mail: comercial@cembre.es



Cembre GmbH
Telefon: +49 089 3580676
Telefax: +49 089 3580677
www.cembre.de
E-mail: sales@cembre.de



Cembre Inc.
Tel.: +1 732 225-7415
Fax: +1 732 225-7414
www.cembreinc.com
E-mail: Sales.US@cembreinc.com

GPT TOOLS

SC5X



PROFESSIONAL SCISSORS

Extremely lightweight and robust for safe, easy handling and comfort. Easy cutting of conductor upto 50sqmm using the shaped grooves in each blade.

KSDC 7 KV



SET OF 7 PROFESSIONAL SCREWDRIVERS

The Cembre range of insulated screwdrivers have dual compound handgrips and an ergonomic design making them particularly practical and comfortable. The size of the insulating cover allows it to be inserted into tight spaces. Each individual screwdriver is tested in accordance with EN 60900.



PLIERS



PROFESSIONAL PLIERS, NIPPERS & GRIPS

The design of Cembre insulated pliers and the use of dual-compound plastic material in the handle optimise the distribution of the force over the entire surface in contact with the palm of the hand. As for all Cembre insulated tools, each individual pair of pliers is tested in accordance with EN 60900.

KIT CSTB1-1



KIT CSTB1-3



VAL GPTA-1



VAL GPTA-2



CTBB1-1



SOFT LINE TOOL HOLDERS

Practical tool bags in robust fabric, with 2 separate compartments to neatly arrange hand tools. Additional equipment may be accommodated via handy hooks and external pockets while documents are safely stored inside. A shoulder strap and sturdy metal handle make it easy to carry.

HARD LINE TOOL HOLDERS

Aluminium cases containing two panels with elastic tool holders and an internal pocket for holding documents or a tablet. Thermoformed base with modular dividers. Fitted with an ergonomic carrying handle and a hinged lid with stop to limit the opening to 90°. Equipped with shoulder strap and selection of tools.

POUCH KIT

Made from soft and strong fabric, equipped with a fast stud belt fastening. It has handy pre-formed compartments for holding pliers, scissors and screwdrivers.

CABLE GLANDS

1900 MAXIblock®



CABLE GLANDS

Material: POLYAMIDE PA6.6

Sealing ring: NEOPRENE®

Cable grip insert: POLYAMIDE PA6.6

O-Ring: NITRILE 70 sh A

Protection: IP 68

Temperature range: -20°C to +90°C

Standard is Light Grey.

Add to code: N for Black, G for Dark Grey



*VDE only for Metric thread

Type	Standard	Reduced Entry	Extended Thread
M12x1,5	1900.M12	1910.M12	1901.M12
M16x1,5	1900.M16	1910.M16	1901.M16
M20x1,5	1900.M20	1910.M20	1901.M20
M25x1,5	1900.M25	1910.M25	1901.M25
M32x1,5	1900.M32	1910.M32	1901.M32
M40x1,5	1900.M40	1910.M40	1901.M40
M50x1,5	1900.M50	1910.M50	1901.M50
M63x1,5	1900.M63	1910.M63	1901.M63

Type	Standard	Reduced Entry	Extended Thread
Pg7	1900.07	1910.07	1901.07
Pg9	1900.09	1910.09	1901.09
Pg11	1900.11	1910.11	1901.11
Pg13,5	1900.13	1910.13	1901.13
Pg16	1900.16	1910.16	1901.16
Pg21	1900.21	1910.21	1901.21
Pg29	1900.29	1910.29	1901.29
Pg36	1900.36	1910.36	1901.36
Pg42	1900.42	1910.42	1901.42
Pg48	1900.48	1910.48	1901.48

4900 MAXIblock®



CABLE GLANDS

Material: POLYAMIDE PA6.6

Sealing ring: NEOPRENE®

Cable grip insert: POLYAMIDE PA6.6

O-Ring: NITRILE 70 sh A

Protection: IP 65

Temperature range: -25°C to +75°C



Type	Standard	Extended Thread
M12x1,5	4900.M12	4901.M12
M16x1,5	4900.M16	4901.M16
M20x1,5	4900.M20	4901.M20
M25x1,5	4900.M25	4901.M25
M32x1,5	4900.M32	4901.M32
M40x1,5	4900.M40	4901.M40
M50x1,5	4900.M50	4901.M50
M63x1,5	4900.M63	4901.M63

Type	Standard	Extended Thread
Pg7	4900.07	4901.07
Pg9	4900.09	4901.09
Pg11	4900.11	4901.11
Pg13,5	4900.13	4901.13
Pg16	4900.16	4901.16
Pg21	4900.21	4901.21
Pg29	4900.29	4901.29
Pg36	4900.36	4901.36
Pg42	4900.42	4901.42
Pg48	4900.48	4901.48

2900 MAXIbrass®



CABLE GLANDS

Material: NICKEL PLATED BRASS

Sealing ring: NEOPRENE®

Cable grip insert: POLYAMIDE PA6.6

O-Ring: NITRILE 70 sh A

Protection: IP 68

Temperature range: -25°C to +100°C



Type	Standard	Reduced	Extended	Ext/reduce
M12x1,5	2900.M12N	2910.M12N	2901.M12N	2911.M12N
M16x1,5	2900.M16N	2910.M16N	2901.M16N	2911.M16N
M20x1,5	2900.M20N	2910.M20N	2901.M20N	2911.M20N
M25x1,5	2900.M25N	2910.M25N	2901.M25N	2911.M25N
M32x1,5	2900.M32N	2910.M32N	2901.M32N	2911.M32N
M40x1,5	2900.M40N	2910.M40N	2901.M40N	2911.M40N
M50x1,5	2900.M50N	2910.M50N	2901.M50N	2911.M50N
M63x1,5	2900.M63N	2910.M63N	2901.M63N	2911.M63N

Type	Standard	Reduced	Extended	Ext/reduce
Pg7	2900.07	2901.07	2910.07	2911.07
Pg9	2900.09	2901.09	2910.09	2911.09
Pg11	2900.11	2901.11	2910.11	2911.11
Pg13,5	2900.13	2901.13	2910.13	2911.13
Pg16	2900.16	2901.16	2910.16	2911.16
Pg21	2900.21	2901.21	2910.21	2911.21
Pg29	2900.29	2901.29	2910.29	2911.29
Pg36	2900.36	2901.36	2910.36	2911.36
Pg42	2900.42	2901.42	2910.42	2911.42
Pg48	2900.48	2901.48	2910.48	2911.48

7900 MAXIinox® 7900A



CABLE GLANDS

Material: STAINLESS STEEL 303/316L

Sealing ring: NEOPRENE®

Cable grip insert: POLYAMIDE PA6.6

O-Ring: NITRILE 70 sh A

Protection: IP 68

Temperature range: -25°C to +100°C



Type	Steel AISI 303	Steel AISI 316L
M12x1,5	7900.M12N	7900A.M12N
M16x1,5	7900.M16N	7900A.M16N
M20x1,5	7900.M20N	7900A.M20N
M25x1,5	7900.M25N	7900A.M25N
M32x1,5	7900.M32N	7900A.M32N
M40x1,5	7900.M40N	7900A.M40N
M50x1,5	7900.M50N	7900A.M50N
M63x1,5	7900.M63N	7900A.M63N

Type	Steel AISI 303	Steel AISI 316L
Pg7	7900.07	7900A.07
Pg9	7900.09	7900A.09
Pg11	7900.11	7900A.11
Pg13,5	7900.13	7900A.13
Pg16	7900.16	7900A.16
Pg21	7900.21	7900A.21
Pg29	7900.29	7900A.29
Pg36	7900.36	7900A.36
Pg42	7900.42	7900A.42
Pg48	7900.48	7900A.48

HYDRAULIC CRIMPING AND CUTTING TOOLS

HT-51	6-240mm²	HT131-C	10-400mm²	HT131-UC	10-400mm²	HT-TC051	Ø50mm	HT-TC026	Ø25mm
									
Crimping force: 50kN		Crimping force: 130kN		Crimping force: 130kN		Cu/Al		Cu/Al /Aldrey/Steel/ACSR	
<ul style="list-style-type: none">• Weight: 2,7 Kg• Double speed action• 180° rotating head		<ul style="list-style-type: none">• Weight: 5,5 Kg• Double speed action• 180° rotating head• Will accept all semi-circular slotted dies		<ul style="list-style-type: none">• Weight: 5,4 Kg• Double speed action• 180° rotating head• Accept accessories for the “deep stepped indent” crimping on aluminium cables		<ul style="list-style-type: none">• Weight: 4,38 Kg• Double speed action• Head can be opened to allow the cutting of running cables• 90° rotating head		<ul style="list-style-type: none">• Weight: 3,2 Kg• Double speed action• Head can be opened to allow the cutting of running cables• 180° rotating head	

BATTERY POWERED HYDRAULIC CRIMPING TOOLS

B540ND	B500ND	6-300mm²	B500	6-300mm²	B1350-C	10-400mm²	B1300-C	10-400mm²
								
New	New							
Crimping force: 60kN	Crimping force: 60kN		Crimping force: 63kN		Crimping force: 132kN		Crimping force: 132kN	
<ul style="list-style-type: none">• Weight: 3,4 Kg• Multifunction OLED Display• Li-Ion 18.0V 2.0Ah Battery• Bilinear structure• Smart release• 180° rotating head• Electronic Pressure Sensor "EPS"	<ul style="list-style-type: none">• Weight: 3,0 Kg• Multifunction OLED Display• Li-Ion 18.0V 2.0Ah Battery• Bilinear structure• Smart release• 180° rotating head• Electronic Pressure Sensor "EPS"		<ul style="list-style-type: none">• Weight: 4,2 Kg• Li-Ion 18.0V 4.0Ah Battery• Double speed action• 180° rotating head• Multifunction OLED Display		<ul style="list-style-type: none">• Weight: 6,5 Kg• Li-Ion 18.0V 4.0Ah Battery• Double speed action• LED lighting• Multifunction OLED Display		<ul style="list-style-type: none">• Weight: 6,5 Kg• Li-Ion 18.0V 4.0Ah Battery• Double speed action• LED lighting• Multifunction OLED Display	

BATTERY POWERED HYDRAULIC CUTTING TOOLS

B-TC250BS	Ø26mm	B-TC500	Ø50mm	B-TC950	Ø95mm	TC050	Ø50mm	RHC131	10-400mm²
									
Cu/Al /Aldrey/Steel/ACSR		Cu/Al		Cu/Al		Cu/Al		Crimping force: 130kN	
<ul style="list-style-type: none">• Weight: 3,4 Kg• Li-Ion 18.0V 2.0Ah Battery• 180° rotating head• Scissor head facilitate the cutting of cables		<ul style="list-style-type: none">• Weight: 5,8 Kg• Li-Ion 18.0V 4.0Ah Battery• 90° rotating head• Head can be opened to allow the cutting of running cables		<ul style="list-style-type: none">• Weight: 7,8 Kg• Li-Ion 18.0V 4.0Ah Battery• 90° rotating head• Head can be opened to allow the cutting of running cables		<ul style="list-style-type: none">• Max operating pressure: 700 Bar• Weight: 3,2 Kg• Head can be opened to allow the cutting of running cables		<ul style="list-style-type: none">• Jaw opening: 25 mm• Max operating pressure: 700 Bar• Weight: 3,8 Kg• Same range of HT131-C	

PULLER-TYPE HOLE PUNCHING TOOLS

RH-FL75	Ø140mm	HT-FL74	Ø140mm	B-FL750	Ø140mm	B68M-P18	700bar	B70M-P24	700bar
									
PULLER-TYPE HOLE PUNCHING HEAD		PULLER-TYPE HOLE PUNCHING TOOL		PULLER-TYPE HOLE PUNCHING TOOL		ELECTRO-HYDRAULIC PUMP		ELECTRO-HYDRAULIC PUMP	
<ul style="list-style-type: none">• Max punching Ø: 140 mm• Max operating pressure: 700 Bar• Weight: 1,9 Kg• Works with a hydraulic pump• 90° rotating coupler• Supplied with Pullers TD-11, TD-19 and spiral bit Ø11,5 mm		<ul style="list-style-type: none">• Max punching Ø: 140 mm• Weight: 3,3 Kg• Supplied with VALP38• Supplied with Pullers TD-11, TD-19 and spiral bit Ø11,5 mm		<ul style="list-style-type: none">• Max punching Ø: 140 mm• Weight: 5,1 Kg• Li-Ion 18.0V 4.0Ah Battery• Punching head pivots 180° through a full 360° rotation• Double speed action• Supplied with Pullers TD-11, TD-19		<ul style="list-style-type: none">• Operating pressure: 729 Bar• Weight: 5,6 Kg• Li-Ion 18.0V 4.0Ah Battery• LED working lights and OLED display• Remote control• Supplied with 2m flexible hose• Double speed action		<ul style="list-style-type: none">• Operating pressure: 729 Bar• Weight: 9,2 Kg• BH2433 Battery 24.0V DC 3.1Ah• ERCH Remote control• Supplied with 3m flexible hose• Double speed action	

PORTABLE HYDRAULIC PUMPS